



CIMA Health Academy

CIMA Health Academy

Empowering global healthcare with comprehensive knowledge, the **CIMA Health Academy** provides extensive training in vaccination and public health, advancing global health initiatives.

CIMA Health Academy offers an online educational platform dedicated to advancing global healthcare standards. Through accessible, interactive, and practical training modules, CIMA Health Academy, as a certified member of the **CPD-UK Certification Service (Membership Number: 19938)**, empowers healthcare professionals with advanced clinical skills and continuous professional development. CIMA Health Academy is committed to transforming healthcare education, promoting superior vaccination practices, fostering professional growth, and fostering community health awareness worldwide. With learners from **77+** countries and over **4,000+** healthcare professionals enrolled, CIMA Health Academy has established itself as the premier global platform for vaccination and public health education, delivering over **150** hours of content across **26** specialized modules worth **11.72 CPD** credits.



CIMA Health Academy - Course Offerings

■ Course 1: Vaccination Programs

A comprehensive overview covering historical development, implementation strategies, monitoring systems, and prospects of vaccination programs globally.



Duration:
13:25:00



CPD Credits:
1.0



CPD Certified
(Certificate No.: 59808)

6 Modules :

- **Module 1:** Historical development and immunology fundamentals
- **Module 2:** Global vaccination efforts and national immunization programs
- **Module 3:** Coverage monitoring and vaccine surveillance systems
- **Module 4:** Special populations and economic considerations
- **Module 5:** Vaccine equity and distribution infrastructure
- **Module 6:** Pandemic preparedness and emerging technologies



Course 1

[Course Overview](#)

Vaccination Programs

A Comprehensive Overview of Development, Impact, and Future Prospects

Module 1: Foundations of Vaccination Programs

Explores the origins and science of vaccination, from historical vaccine development and immunology basics to the wide-ranging impacts of vaccines. It covers diverse vaccine types, immune system functionalities, and epidemiological contributions to global public health enhancement.

Module 2: Implementation and Impact

Delves into Global Vaccination Efforts, National Immunization Programs, Vaccine Coverage and Access, Vaccine-Preventable Diseases, and the pivotal role of Herd Immunity in public health.

Module 3: Monitoring and Evaluation

Covers vaccine coverage monitoring, vaccine surveillance systems, assessing vaccine effectiveness, vaccine safety monitoring, and strategies to address vaccine hesitancy for enhanced public health protection.

Module 4: Special Considerations and Impact

Addresses vaccines in special populations, economic impacts, ethical considerations, innovative vaccine technologies, and crucial lessons from the COVID-19 vaccination efforts to enhance global health responses.

Module 5: Vaccine Equity and Infrastructure

Explores advanced vaccine management, focusing on distribution strategies, immunization data systems, supply management, and the roles of global health organizations and community health workers, essential for overcoming health disparities and optimizing global immunization

CIMA Health Academy - Course Offerings

■ Course 2: Global Immunization Recovery

In-depth exploration of WHO's Big Catch-Up Initiative, addressing global vaccination gaps and strengthening immunization systems post-pandemic.



Duration:
12:44:00



CPD Credits:
1.0



CPD Certified
(Certificate No.: 66251)

4 Modules :

- **Module 1:** EPI achievements and vaccination impact assessment
- **Module 2:** COVID-19 impact and zero-dose children identification
- **Module 3:** Big Catch-Up implementation and funding strategies
- **Module 4:** Polio transition planning and outbreak prevention



Course 2

[Course Overview](#)

Global Immunization Recovery

Implementing the WHO Big Catch-Up Initiative on missed vaccinations

Module 1: Historical Impact of Vaccination Programs on Global Health

Examines the historical impact of vaccination programs and their crucial role in global public health. It explores the achievements of the Expanded Program on Immunization (EPI), quantifies lives saved by vaccines, and highlights the ongoing challenges in achieving universal vaccine coverage.

Module 2: Current Global Vaccination Gaps and WHO Data on Missed Vaccinations

Examines the impact of recent global events on immunization efforts, focusing on the regression in coverage rates and the emergence of zero-dose children. It introduces the IA2030 Framework for Action, analyzes outbreaks of vaccine-preventable diseases, and the complex factors contributing to immunization gaps worldwide.

Module 3: Big Catch-Up Information Pack for Regional and Country Teams

Provides a comprehensive overview of the Big Catch-Up initiative, including its rationale, objectives, and implementation strategies. It covers the application process, funding support, antigen eligibility, and guidelines for developing catch-up vaccination plans to address immunization gaps.

Module 4: (Part1 & Part2): State of Readiness to Effectively Deliver Polio Essential Functions

This module examines global readiness for non-GPEI polio functions, covering the Expanded Program on Immunization's 50-year impact, IA2030 implementation, and WHO/UNICEF 2023 estimates. It analyzes the Big Catch-Up initiative's impact on reducing zero-dose children, explores regional disparities, and addresses challenges in achieving full immunization coverage. The module emphasizes data-driven approaches and strategies for outbreak prevention in a changing global landscape.

CIMA Health Academy - Course Offerings

■ **Course 3: Nutrition-Immunization Intervention Synergy**

Cost-effective integration strategies examining the critical intersection between nutrition and immunization interventions for enhanced child health outcomes.



Duration:
3:13:00



CPD Credits:
0.25

5 Learning Segments :

- **Segment 1:** Nutrition-specific and nutrition-sensitive interventions
- **Segment 2:** Complementary service models and system integration
- **Segment 3:** CGD guideline crosswalk and cost-effectiveness analysis
- **Segment 4:** Co-delivery frameworks and coordinated outreach
- **Segment 5:** Success measurement and comparative assessment



Course 3

[Course Overview](#)

Nutrition-Immunization Intervention Synergy

Cost-Effective Optimization of Child Health

Integrating Nutrition & Vaccination: A Cost-effective Path to Better Child Health

This comprehensive learning unit examines the critical intersection between nutrition and immunization interventions, providing evidence-based strategies for implementing cost-effective integrated approaches that enhance child health outcomes globally.

● Understanding Nutrition Interventions

Explores nutrition-specific and nutrition-sensitive approaches while revealing the reciprocal relationship between nutritional status and immune response in children.

● Nutrition and Vaccination Integration

Analyzes complementary service models, positioning these interventions as pillars of Universal Health Coverage while addressing system fragmentation.

● Cost-Effectiveness Analysis

Evaluates intervention prioritization through the CGD's guideline crosswalk, highlighting vaccination's exceptional value among nutrition investments.

● Implementation Strategies

Presents practical frameworks for service integration through co-delivery, shared resources, and coordinated outreach across healthcare settings.

CIMA Health Academy - Course Offerings

■ Course 4: Using ChatGPT in Healthcare and Vaccination

Practical AI integration training for healthcare professionals, covering communication enhancement, workflow optimization, and ethical implementation in vaccination programs.



Duration:
17:33:00



CPD Credits:
1.37

5 Modules :

- **Module 1:** AI fundamentals and ethical healthcare integration
- **Module 2:** Vaccine communication and hesitancy management
- **Module 3:** Immunization record tracking and adverse event documentation
- **Module 4:** Data analysis and vaccine demand prediction
- **Module 5:** Privacy protection and bias prevention protocols



Course 4

[Course Overview](#)

Using ChatGPT in Healthcare and Vaccination

A Practical Guide for Healthcare Professionals

Module 1: Introduction to ChatGPT in Healthcare and Vaccination

Learn how ChatGPT enhances patient care, streamlines vaccination communication, and improves workflow efficiency. This module covers AI fundamentals, prompt crafting, and ethical AI use in healthcare.

Module 2: Improving Vaccination Communication with ChatGPT

Discover how ChatGPT improves vaccine communication by engaging parents, addressing hesitancy, and ensuring cultural sensitivity. Learn to craft personalized messages, debunk myths, and refine strategies for better outreach.

Module 3: Enhancing Immunization Management with ChatGPT

Optimize vaccine management with ChatGPT. This module covers tracking immunization records, setting reminders, and documenting adverse events efficiently to improve program effectiveness.

Module 4: Data-Driven Decision-Making Using ChatGPT

Leverage ChatGPT for smarter healthcare decisions. Learn to generate reports, analyze data, and predict vaccine demand to optimize resource allocation and immunization planning.

Module 5: Ethical Use of ChatGPT in Healthcare

Ensure responsible AI use in healthcare. This module covers privacy, bias, transparency, and human oversight, helping professionals integrate ChatGPT ethically into their workflows.

CIMA Health Academy - Course Offerings

■ **Course 5: Adverse Events Following Immunization (AEFI)**

Comprehensive vaccine safety training aligned with WHO/GAVI frameworks, covering identification, investigation, and management of adverse events to maintain public confidence.



Duration:
29:16:00



CPD Credits:
2.3

3 Modules :

- **Module 1:** AEFI classification systems and safety fundamentals
- **Module 2:** Pharmacovigilance frameworks and reporting tools
- **Module 3:** Systematic investigation and crisis management protocols



Course 5

[Course Overview](#)

Adverse Events Following Immunization (AEFI)

Monitoring Systems and Response Strategies

Module 1: Introduction and Foundational Concepts in AEFI

This module comprehensively covers Adverse Events Following Immunization (AEFI), including WHO/GAVI classification systems, frequency/severity categorization, and vaccine safety fundamentals. You'll learn about vaccine components, administration techniques, special population considerations, and emergency preparedness requirements. The content introduces essential pharmacovigilance concepts and global monitoring standards needed to identify, manage, and report AEFIs effectively within vaccination programs.

Module 2: AEFI Surveillance and Reporting Systems

This module integrates pharmacovigilance into AEFI monitoring systems, covering surveillance frameworks, reporting tools, and quality assurance. It examines the roles of regulatory authorities, pharmacovigilance centers, and immunization programs in safety monitoring. Participants will learn about technology solutions, data management, causality assessment, and global integration. Content highlights standardized classification, resource allocation, and international collaboration for effective vaccine safety surveillance.

Module 3: AEFI Investigation and Management

This advanced module covers systematic investigation and management of AEFI, including case identification, data collection, site inspection, stakeholder interviews, and causality assessment. Learn clinical management protocols, public health responses, and post-investigation actions. Apply investigation frameworks, classify causality, implement interventions, and develop quality improvement systems. Content emphasizes evidence-based decisions, system enhancement, and stakeholder collaboration to maintain public trust in vaccination programs.

CIMA Health Academy - Course Offerings

■ Course 6: The First 1000 Days of Child Development

Critical period optimization covering early childhood development, risk factor identification, and evidence-based interventions, including vaccination integration.



Duration:
27:34:00



CPD Credits:
2.1

4 Module Sections :

- **Section 1:** Critical timeframe significance and developmental domains
- **Section 2:** Global childcare crisis and intervention consequences
- **Section 3:** Biological and environmental risk factor assessment
- **Section 4:** Evidence-based interventions and program scaling strategies



Course 6

[Course Overview](#)

The First 1000 Days of Child Development

From Understanding the Importance to Scaling Interventions for Lifelong Impact

Module 1: The Significance and Consequences of Early Childhood Development

Section 1: The Significance of Early Childhood Development and the First 1000 Days

Explores the definition and critical timeframe of early childhood development, emphasizing the profound significance of the first 1000 days (conception to 2nd birthday) across physical, cognitive, and social-emotional domains, examining long-term consequences and key developmental milestones from UNICEF Parenting.

Section 2: The Problem and the Cost of Inaction in Early Childhood Development

Outlines consequences of inaction during this period, highlighting the alarming global childcare crisis affecting millions, particularly in low- and middle-income countries, and examines major individual and societal costs, including stunting, malnutrition, inadequate care, poor educational outcomes, reduced productivity, economic loss, and intergenerational poverty.

Module 2: Risk Factors and Evidence-Based Interventions

Section 1: Risk Factors and their Effects on Child Development

- Part 1: Reviews biological risks—*intrauterine growth restriction, malnutrition, iodine/iron/zinc deficiencies, and maternal infections.*
- Part 2: Addresses vaccination gaps, environmental toxins, institutionalization, violence, poverty, and inadequate caregiving that limit development.

CIMA Health Academy - Course Offerings

■ **Course 7: Empowering Community Health Champions**

WHO-aligned comprehensive CHW training covering immunization program support, strategic communication, and equitable service delivery for IA2030 goal advancement.



Duration:
47:11:00



CPD Credits:
3.7

5 Modules :

- **Module 1:** Vaccination science and CHW service delivery frameworks
- **Module 2:** GATHER communication and vaccine hesitancy management
- **Module 3:** Maternal immunization and pregnancy-specific protocols
- **Module 4:** Equity programming and zero-dose population outreach
- **Module 5:** AEFI recognition and crisis communication strategies



Course 7

[📄 Course Overview](#)

Empowering Community Health Champions

WHO-Aligned Strategies for Advancing IA2030 Immunization Goals

Module 1: Introduction to Vaccination and CHWs

Covers CHW roles, community mapping, household registration, vulnerable populations identification, and the CHPS system. Introduces immunization principles, service delivery frameworks, timed home visits, integrated management, and community-based vaccination program implementation.

Module 2: Strategic Communication and Community Engagement for Immunization

Covers the GATHER approach, vaccine hesitancy management, misinformation control, crisis communication, and community mobilization. Emphasizes culturally appropriate messaging and systematic community engagement for enhanced vaccination acceptance and program sustainability.

Module 3: Pregnancy and Vaccination

Covers maternal immunization strategies, counseling approaches, pregnancy-specific vaccination, and WHO-recommended vaccines. Emphasizes the scientific rationale and timing considerations. Addresses pregnancy-specific hesitancy through communication frameworks and antenatal care.

Module 4: Equitable Access and Reaching Underserved Populations

Equity-focused programming for vulnerable populations, tailored outreach, and community monitoring. Covers RED strategy, mobile vaccination, geospatial data, participatory tools, advocacy strategies, necessary institutional change, and barrier analysis to close coverage gaps and reach zero-dose children.

CIMA Health Academy - Course Offerings

■ **Course 8: HPV Vaccination Towards Cervical Cancer Elimination**

WHO-aligned comprehensive training addressing the global strategy to eliminate cervical cancer as a public health problem through the 90-70-90 targets by 2030.



Duration:
34:05:00



CPD Credits:
2.7

5 Modules :

- **Module 1:** HPV virology, transmission dynamics, and cervical cancer epidemiology
- **Module 2:** Vaccine types, immunological mechanisms, and safety evidence
- **Module 3:** Program planning, delivery strategies, and cold chain management
- **Module 4:** Communication frameworks and vaccine hesitancy management
- **Module 5:** Prevention continuum integration and WHO elimination roadmap



Course 8

[Download Course Overview](#)

HPV Vaccination Towards Cervical Cancer Elimination

WHO-Aligned Comprehensive Training for Health Professionals

Module 1: Understanding HPV and Cervical Cancer

Covers HPV virology, transmission dynamics, and high-risk types 16 and 18, which are responsible for 70% of cervical cancers. Explores 15–20-year disease progression, global epidemiological burden, health inequities in LMICs, and WHO's 90-70-90 elimination strategy.

Module 2: HPV Vaccines—Types, Safety, and Evidence

Examines bivalent, quadrivalent, and nine-valent vaccines using virus-like particle technology. Covers immunological mechanisms, single-dose breakthrough evidence, WHO 2022 dosing recommendations, safety data spanning 500 million doses, and AEFI investigation frameworks.

Module 3: Planning and Delivering HPV Vaccination Programs

Covers target population selection, prioritizing girls 9–14, school-based and mobile delivery platforms, and freeze-sensitive cold chain management. Includes supply forecasting, temperature monitoring, coverage measurement, and district-level microplanning strategies.

Module 4: Addressing Vaccine Hesitancy and Communication

Addresses hesitancy using the WHO 3 Cs framework—confidence, complacency, and convenience. Covers HPV-specific barriers, provider recommendation impact, evidence-based messaging, cultural adaptation, stakeholder engagement, crisis communication, and misinformation response.

Module 5: Integration with Cervical Cancer Prevention

Integrates primary vaccination, secondary screening, and tertiary treatment within the prevention continuum. Explores therapeutic HPV vaccines, FIGO staging, service coordination approaches, and mathematical modeling demonstrating 13 million deaths prevented by 2100.

Learning Experience

■ Through CIMA Health Academy's courses, participants engage with:

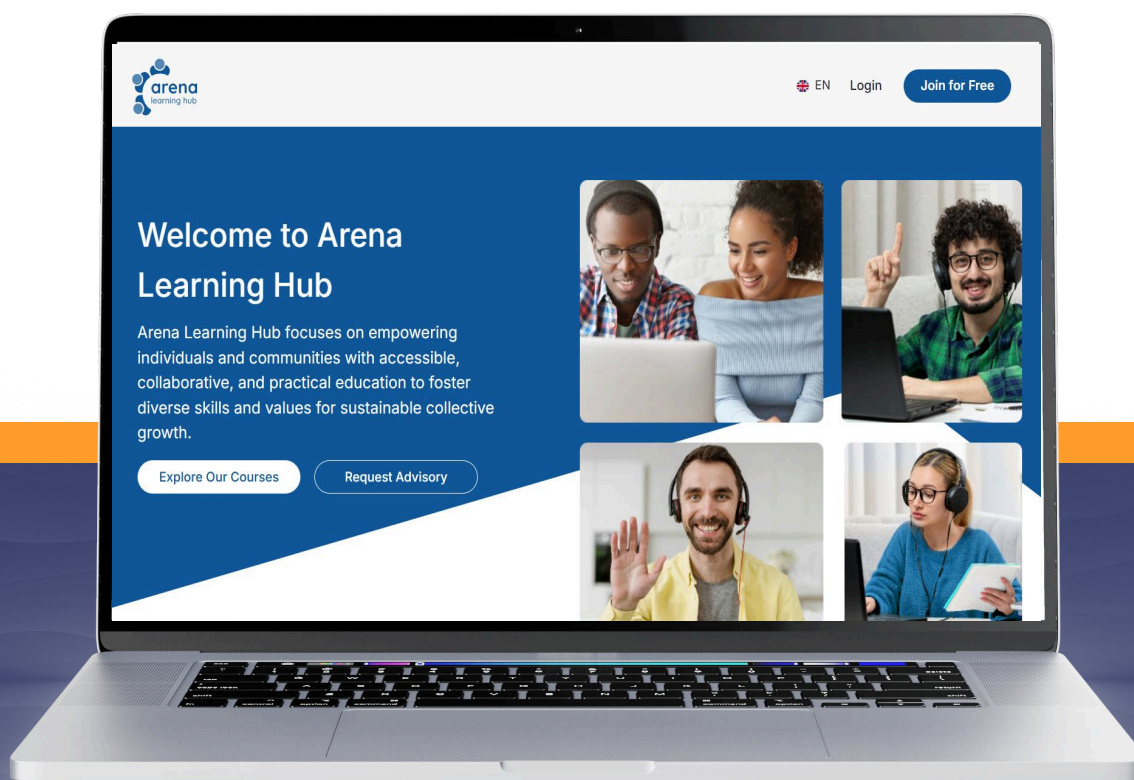
- Evidence-based content aligned with WHO, UNICEF, and GAVI frameworks
- Interactive learning materials and practical case studies
- Real-world applications and implementation strategies

■ Learning Platform

CIMA Health Academy delivers its courses through Arena, an advanced educational platform designed for healthcare professionals.

Features include:

- Interactive content with adjustable learning pace
- Real-time progress tracking and accomplishments dashboard
- Mobile-friendly accessibility across all devices
- Comprehensive learner support with immediate feedback
- Instant achievement recognition and digital certificates
- Downloadable and shareable professional credentials
- Instant digital certification upon successful quiz completion with downloadable credentials



Learning Experience

■ Strategic Partnerships

CIMA Health Academy has established a distinguished global network of collaborations spanning multiple continents and sectors. Our prestigious collaborations include leading academic institutions such as Higher Colleges of Technology (HCT-UAE), Lebanese American University's Alice Ramez Chagoury School of Nursing, and the University of Lilongwe; national health authorities, including Jordan Center for Disease Control and E.P.I. Cameroon; professional regulatory bodies such as the Order of Nurses in Lebanon; international medical associations such as the International Lebanese Medical Association (ILMA) and the Swedish Lebanese Medical Association (SLMA); municipal health initiatives like the Municipality of Kaa El Rim; educational organizations including STUDMIR and the Immunopaedia Foundation; and numerous other healthcare institutions worldwide.

We maintain a recognized presence on international platforms, including CPD UK, UNODC, the Mediterranean Life Sciences Union, and the International Vaccinology Course, reinforcing our commitment to evidence-based global health education excellence.

■ Expanding Global Reach

CIMA Health Academy actively seeks and welcomes new strategic partnerships with universities, medical schools, healthcare institutions, professional associations, government health agencies, NGOs, and international organizations committed to advancing vaccination science and public health education. Our collaborative approach fosters knowledge exchange, professional development, and sustainable health system strengthening across diverse global communities.

Join our growing international network dedicated to transforming healthcare education and advancing global immunization excellence.

www.cima.care